




BEYOND JUST LASERING

World's First
AI, AR, & Robotics
Integrated Diode Laser Machine



 www.bioluminous.in

Conceptual illustration for demonstration purposes only.

“ It's not about being the best;
it's about being better than you were yesterday ”

Elon Musk



Empowering **Your Future** with Innovation

See the world of tomorrow, **Today !!**

Bioluminous is the World's most advanced diode laser, integrating **Artificial Intelligence, Augmented Reality, and Robotics**. This cutting-edge technology enhances precision and efficiency, enabling faster, more accurate treatments. With its innovative systems, Bioluminous transforms patient care, improving outcomes and recovery times, and



Augmented Reality

Bioluminous Augmented Reality goggles enhance precision by overlaying digital images, such as MRI and ultrasound, providing real-time guidance. This technology help surgeons visualize internal structures, improving accuracy, reducing errors, and optimising patient outcomes. The AR glasses also enable screen sharing directly from the Bioluminous machine.

The Dual Screen

Bioluminous features dual portable 10-inch screens, allowing the surgeon to mirror the same display and simultaneously view ultrasound images while performing EVLA procedures. This enhances visibility and supports precision during treatments.



How Dual Screen Benefit me ?

The Dual Screen mirrors the Bioluminous screen directly in front of the surgeon. Although the machine is positioned at a distance, the mirrored display allows the surgeon to view the exact energy values delivered by the machine.



The Printer

A standout feature of the Bioluminous machine is its integrated compact thermal printer, capable of providing an instant A4 printout of the complete surgery report immediately after the procedure.



The report includes details such as

Date | Doctor's Name | Hospital ID | Patient Name | Age |
Procedure Name | Energy Used | Total Laser Time | Total
Watts | Total Energy Fiber Type

AI Goggles

with Laser Protection



The Bioluminous device features a 12MP AI-powered dual camera for superior imaging and voice-controlled laser protection goggles with advanced detection technology, ensuring safety and seamless usability.

The Gallery Inside

Bioluminous offers memory options of **16GB and 32GB**, providing ample storage for surgery videos and photos. Additionally, it comes equipped with built-in full HD surgery procedure videos, offering a convenient reference whenever needed.



← Edit Patient Info

Patient Name Default

Patient Id 1

Age Optional

Phone Optional

Patient Location Optional

Doctor Name Admin

Disease Information Optional

Patients Database

You can store an unlimited amount of patient data in bioluminous system.

- Patient Name
- Patient ID
- Mobile No
- Location
- Age
- Diseases Info
- Doctor Name



5 Years **Warranty**

Bioluminous provides a 5-years replacement warranty on premium versions, ensuring long-lasting quality and complete customer satisfaction with every installation



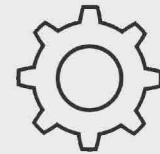
Multiple Profile

The System provides **Multiple Login Options**, allowing multiple users to access it with distinct usernames and passwords. This feature aids in identifying and better managing respective doctors patient



GPS Connectivity

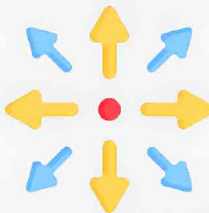
The GPS option is advantageous for independent doctors. You can monitor your machine's location using your mobile device, providing an added security feature.



UPDATE

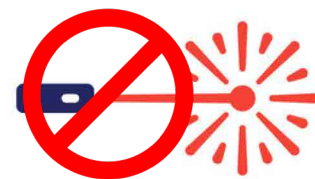
Software **Update**

Leveraging british technology in both hardware and Android software allows for customisation of any requirements and seamless integration of new therapies into your system.



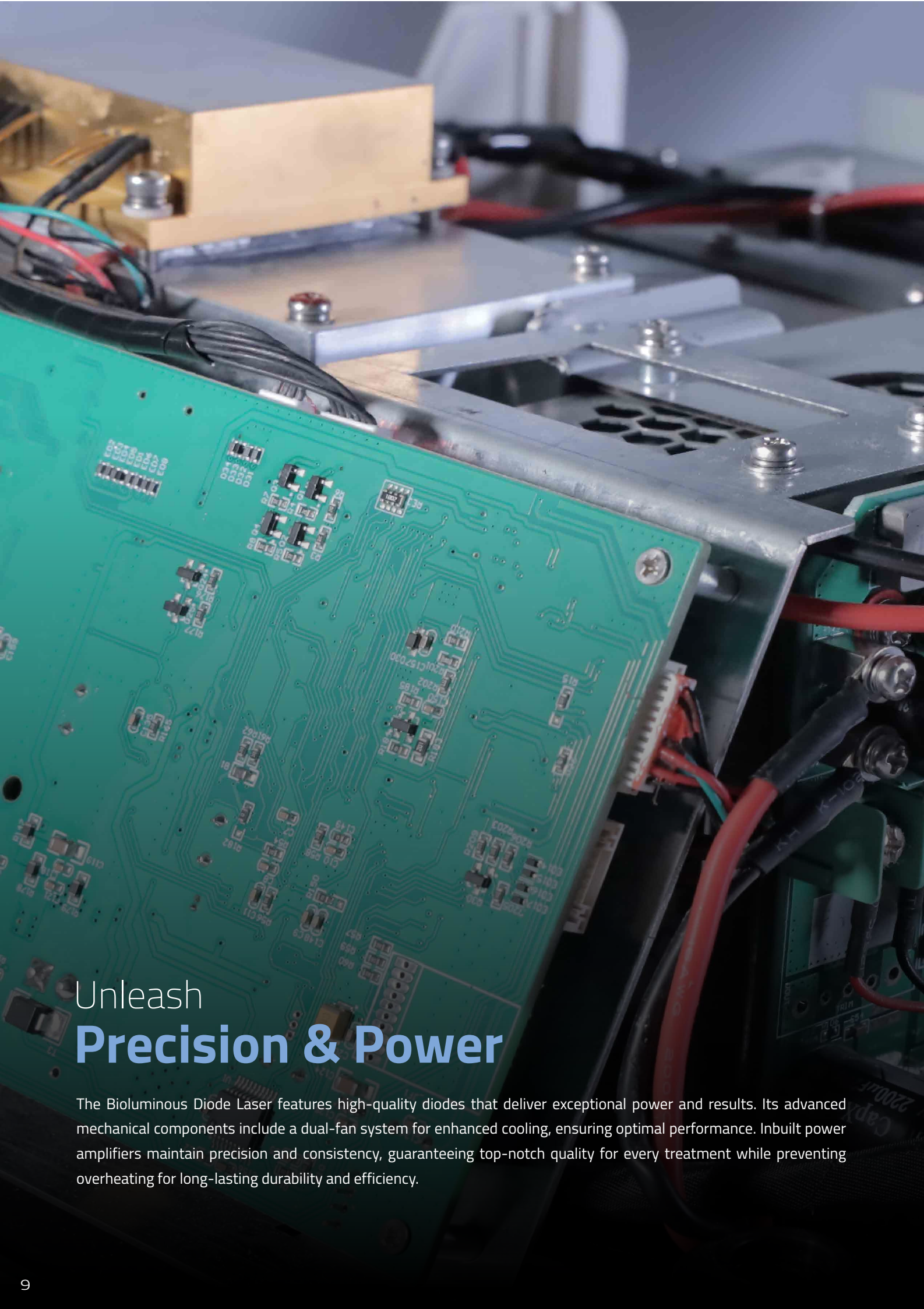
Broad Range of Models

Bioluminous Laser introduces a **Pioneering Range** of models, setting an industry precedent. Choose the variant that best aligns with your specific requirements.



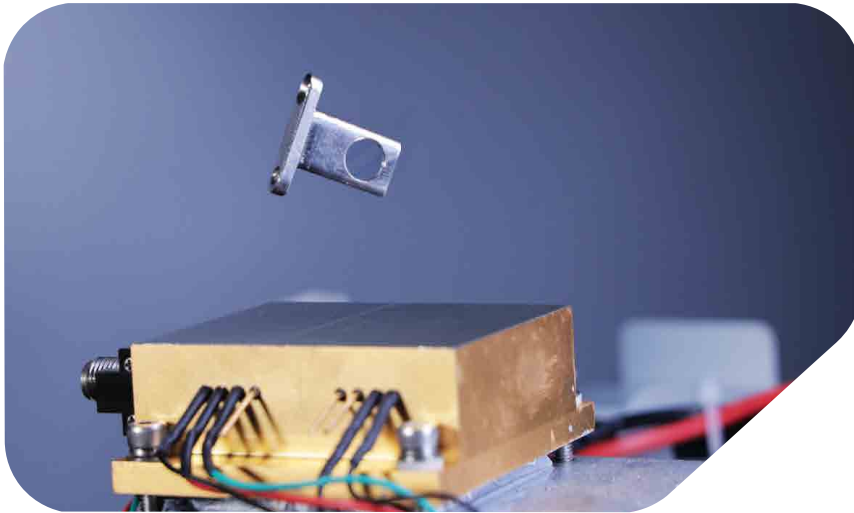
No Fiber Lock

Bioluminous operates as an **Open System** without a fiber locking mechanism.



Unleash **Precision & Power**

The Bioluminescent Diode Laser features high-quality diodes that deliver exceptional power and results. Its advanced mechanical components include a dual-fan system for enhanced cooling, ensuring optimal performance. Inbuilt power amplifiers maintain precision and consistency, guaranteeing top-notch quality for every treatment while preventing overheating for long-lasting durability and efficiency.



Optimal Diode **Protection**

Our Laser Diode Lens ensures maximum performance and longevity by providing superior protection. Designed to enhance efficiency, it safeguards the diode, maintaining optimal function and extending the lifespan of your equipment.

Fuse System

Our advanced fuse system provides guaranteed power protection, preventing damage to the laser diode from power fluctuations. This reliable safeguard ensures consistent performance and extends the lifespan of your laser equipment.



Applications

- Proctology
- Surgery
- Gastroenterology
- Cosmetic Surgery
- ENT
- Vascular Medicine
- Podiatry
- Dental
- Gynaecology

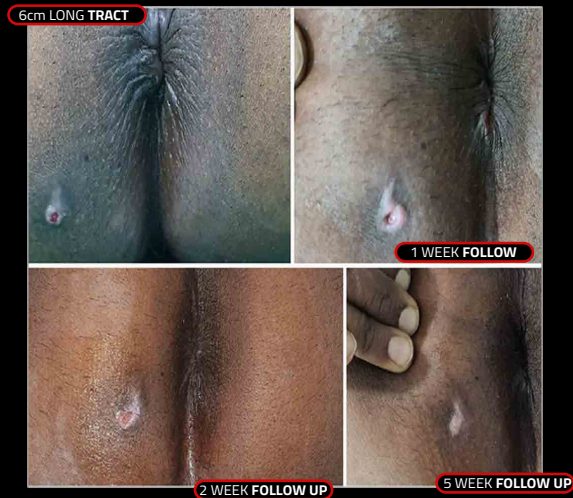
Proctology



FISTULECTOMY (OPEN SURGERY) VS LASER



Fistula open surgery, or fistulectomy, removes the abnormal passage but carries risks like infection, incontinence, delayed healing, and recurrence, often resulting in pain, bleeding, and prolonged recovery.



Laser fistula is a minimally invasive technique that uses a laser fiber to seal the fistula tract, promoting faster healing with less pain, reduced infection risk, minimal tissue damage, and quicker recovery compared to traditional methods.

laser surgery



Ai Based Advanced Laser Surgery for



Fistula



Fissure



Piles /
Haemorrhoids



Pilonidal sinus



Before laser technology, surgeries like fistula and pilonidal sinus often caused large wounds and longer surgery times, leading to challenging recoveries.



BL LASER FULGURATION (LAFT)

Laser Hemorrhoidopexy is a minimally invasive treatment that uses a focused laser beam to shrink hemorrhoidal tissue and seal blood vessels.

This results in reduced bleeding, less pain, and faster recovery compared to traditional surgery. It is typically performed on an outpatient basis, allowing for a quick return to daily activities.

ACCESSORIES

Radial Fiber



Length : 3M

Sterile Packing (ETO)

NA 0.37

400um/600um

SMA 905 Connector

Bare Fiber



Length : 3M

Sterile Packing (ETO)

NA 0.37

400um/600um

SMA 905 Connector

Procto Kit



Flexible Drapes

160x200cm

Steripes 4 Pcs

Wrap- 1 Pcs

Disposable

Fistula Kit



Fistula Probe Full Set

Stainless Steel

Durable

11 Prob Set

With 8x4 Medical Tray

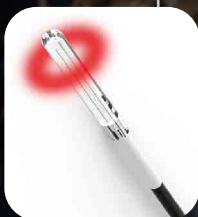
Vascular

EVLA

Bioluminous advanced Al laser offers precise and effective varicose vein treatment. Using cutting-edge technology, it targets veins with accuracy, reducing recovery time, minimizing discomfort, and ensuring optimal, long-lasting results for patients.

ACCESSORIES

Radial Fiber



Length : 3M

Sterile Packing (ETO)

NA 0.37

400um/600um

SMA 905 Connector

Bare Fiber



Length : 3M

Sterile Packing (ETO)

NA 0.37

400um/600um

SMA 905 Connector

Radial Sheath Kit



LasoSheath

Fr.6/7

GW. 0.035 (0.89mm)

18G x2 3/4 Needle

Robotic Laser Arms

Bioluminous Robotics Laser Varicose Vein procedure uses robotic **Precision to Guide a laser fiber** into the affected vein, sealing it with targeted energy.

- ✓ Precision and Accuracy
- ✓ Minimally Invasive
- ✓ Reduced Recovery Time
- ✓ Enhanced Safety
- ✓ Less Pain
- ✓ Long-Term Effectiveness
- ✓ Precision in Laser Application
- ✓ Reduced Risk of Infection
- ✓ Cosmetic Benefits



Conceptual illustration for demonstration purposes only.

Gynaecology

Lasers are now widely used in laparoscopy, particularly for infertility, vaginal rejuvenation, and treating sexually transmitted lesions in gynaecology. With outpatient procedures and minimally invasive treatments, lasers enable effective office-based hysteroscopy, allowing for precise vaporisation of polyps and myomas with minimal pain, no bleeding, and fast results.



Clinical Applications

- Laser Vaginal Rejuvenation (LVR)
- Stress Urinary Incontinence (SUI)
- Vaginal Tightening
- Vaginal Atrophy
- Vaginal Relaxation
- Genito-urinary Syndrome of Menopause
- Post-Delivery Rehabilitation
- Vaginal Dryness & Recurring Infections

Colposcopy Applications

HPV lesions

- Cysts of the mucosa
- Cervical intraepithelial neoplasia
- Fornix and cupola pathologies Ectopic lesions
- Benign erythroplakia
- Laparoscopic Laser Treatments

Adhesions

- Endometriosis
- Fallopian tube microsurgery
- Ectopic pregnancy
- Dysfunctional uterine bleeding
- Resection of uterine septum
- Ablation of the uterosacral Ligaments
- Ovarian drilling (PCOS)
- Hysterectomy

ACCESSORIES

Surgery Handpiece



Stainless Steel

Length :108.5mm

Diameter : 12.5mm

5 pcs Cannulas

LVR & SUI Therapy Handpiece



Diameter: 35mm

Length :200mm

Weight: 400g

600um radial fiber with 3m fiber cable

Vaginal Therapy Handpiece



Aluminum Alloys

Spot Size : 30mm

SMA 90 on Both Side

Therapy

Cosmetic Gynaecology

Cosmetic gynaecology involves aesthetic, non-surgical, and minimally invasive procedures to correct and enhance various genital structures. These areas include the labia minora, labia majora, clitoral hood, mons pubis, perineum, vulva, vagina, hymen, and abdomen.



1 in 4 Women

Nearly one in four women aged 18 and older experiences unexpected bladder leaks.



Painful Sex 46%

46% of menopausal women experience pain during sex. It's time for a change.



Around 17%

Women aged 18-50 often experience problems with vaginal dryness during sex, even before menopause occurs.

Plastic Surgery

Laser Lipolysis is a non-surgical fat removal and body reshaping treatment. Using a 980 nm diode laser, it targets fat cells, tightens skin, and boosts collagen. The 1210 nm wavelength enhances fat absorption, promoting selective photothermostimulation (SPS) for fat grafting, liposculpture, and facial rejuvenation with less trauma than traditional methods



Safely remove fat



Raise self- esteem & confidence



Reduce pressure on blood vessels, thereby improving blood circulation



Reshapes those areas of the body where



Health conditions improve due to fat loss exercise and diet have failed

Radial Fiber



Length : 3M

Sterile Packing (ETO)

NA 0.37

400um/600um

SMA 905 Connector

Bare Fiber



Length : 3M

Sterile Packing (ETO)

NA 0.37

400um/600um

SMA 905 Connector

Liposuction Handpiece



Stainless Steel

Length : 108.5mm

Diameter : 12.5mm

5 pcs Cannulas

400/600/um Suitable



Jowls, Chin & Neck



Arms



Breast



Abs, Hips



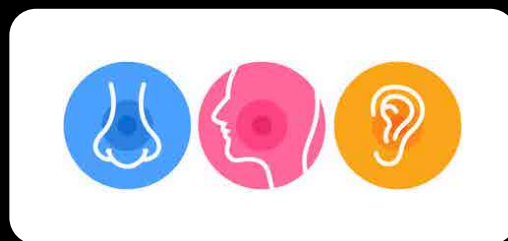
Back, Buttocks/
Thighs



Knees, Calves

ENT

Diode lasers are commonly used in ENT surgeries for their precision, safety, and versatility. They are ideal for procedures like turbinate reduction and vocal cord lesion removal, minimising bleeding, reducing pain, and promoting faster healing. Their minimally invasive nature preserves healthy tissue, improving outcomes and reducing recovery time. The compact design and excellent control make them ideal for delicate procedures in confined spaces.



Clinical Applications

Ear



- Paracentesis
- Mucosa Hyperplasia
- Stapes Surgery
- Removal of cholesteatoma Cysts
- Accessory auricle
- Tumors of the inner ear
- Hemangioma
- Myringotomy
- Cholesteatoma
- Tympanitis

Nose



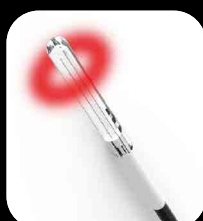
- Nasal Polyp, Rhinitis
- Turbinate reduction
- Turbinate treatment
- Septum spur
- Septum deformation
- Cysts & Mucocles
- Epistaxis
- Stenosis & Synechia
- Sinus Surgery
- Dacryocystorhinostomy (DCR)
- Laser assisted tuboplasty of the eustachian tube (LETP) with a special micro endoscope
- Nasal Sinus Surgery
- Tonsillectomy, tonsillectomy/ LAUP

Throat



- Polypectomy in area of vocal ligaments
- Polyps-/ papilloma resection
- Epistaxis treatment
- Laryngeal carcinoma
- Cysts, mucous cysts
- DCR treatment/Lacrimal surgery
- Removal of stenosis in lacrimalis
- Synechia, stenosis in endonasal structures
- Tumor, Granuloma resection
- Congenital larynx stenosis
- Hemangiomas
- Morbus Osler
- Uvulopalatoplasty (LAUP)
- Tonsillotomy
- Glossectomy

Radial Fiber



Length : 3M
Sterile Packing (ETO)
NA 0.37
400um/600um
SMA 905 Connector

Bare Fiber



Length : 3M
Sterile Packing (ETO)
NA 0.37
400um/600um
SMA 905 Connector

ENT Handpiece



Set of 7 pieces
Set of 7 pieces
Gear Ratio : Direct
Ergonomics : Straight
Length : 143 mm (5.6 in)

RU seeking specialised **hands-on training** in laser procedures..?

Join Oreol Academy – Empowering Doctors with Hands-On Training and International Certifications in Laser and Minimally Invasive Procedures – Since 2017.



RECOGNITIONS & APPROVALS

INDIAN



UGC



Ministry of Ayush



National Council for
Teachers Education



ISO Certifications



Indian Nursing
Council



Ministry of Health &
Family Welfare



Association of Indian
University



Pharmacy Council of
India

INTERNATIONAL



UK Accreditation Committee



Commonwealth University
College Of Medicine



ISO Certifications



International Accreditation
Forum



Skill Development
Council Canada

Courses

- Advanced Laser Assisted Liposuction (ALAL)
- Comprehensive Endovenous Laser Ablation (CELA)
- Fellowship in Cosmetic Gynaecology
- Comprehensive Laser Proctology (CLP)
- Advanced in RIRS with Direct Scope Suction (RIRS-TFL-DS)
- Comprehensive Diode Laser Therapy In ENT
- Post MBBS-MD Course from USA
- Fellowship in Robotic Surgery (USA)
- Comprehensive Coloproctology (CCP)
- Masters in Percutaneous Laser Disc Decompression (MPLDD)
- Fellowship in Diabetology and Lifestyle Medicine
- Fellowship in Dermatology
- Fellowship In Cardiology (USA)
- Excimer Laser in Cardiology (India)
- Fellowship in IVF
- Fellowship in Neonatology
- Fellowship in Emergency Medicine and ICU
- Medico Legal Workshop for Surgeons



WHY US ?

(How we are different from others)



**100%
Repayment**
if dissatisfied



Authentic
Certification
Provided



Training **Videos**
& **Photos**
Future Reference



Real
Hands - ON
Training



Batch Size
07-10
Surgeons



Free Attend Unlimited
Times Until You Are
Confident



International
Certification



**Online &
Offline** Support



HandBook
Study Materials



Theory
Class



Food
Preferences



Member
of the Laser Club

Accessories

STANDARD ACCESSORIES



Foot Switch

Robust fibreglass-reinforced plastic foot control
Minimal design
Waterproof: IPX8 (IEC 60529)



Goggle

Zero Power
Polycarbonate
Black Color



Carry Case

Black color
Weight : 2Kg
Material : Polypropylene



Radial Fiber

Standard SMA 905
Length : 3M
Marking Line : Every 1 Cm



Bare Fiber

Standard SMA 905
Length : 3M
Flat Tip (Straight emission)



Handpiece

Dimensions: 12cm
Weight: 70Gm
Compatible Fiber : 200um, 400um, 600um

OPTIONAL ACCESSORIES



Conical Fiber

Standard SMA 905
Length : 3M
Material : Silica
Size : 600 Micron



LVR Probe Set

Diameter: 35mm
Length :200mm
Weight: 400g
600um radial fiber with 3m fiber cable
Application: Cosmetic Gynaecology



Laser Proctoscope

Half Cut Proctoscope
Made from high-quality plastic.
Size 32
Application: Proctology



Fiber Cutter

Length : 135mm
Blade Width : 6mm
Blade Composition: Carbon steel



Lipolysis Set (Bare Fiber)

Set: 5 pieces cannula
Fiber Size: 200-600µm fiber
Length: 100mm,150mm,200mm
250mm,300mm
Application: Plastic Surgery



Fistula Probe Set

Dimension : 6-7-8
Material : Copper
Size: 6 inch, 7 inch & 8 inch
Application: Surgery



Surgery handpiece

Fibers: 200um, 400um, 600um
Length of fiber extended adjustable
Application: Dental, Surgery



Laser Trolley set

Dimension : 762x460mm (WxL)
Height Adjustable
Size: 4 Feet



Fistula Curette

Holding Instruments
QTY Per Pack : 7
Color : Silver
Material : SS



Lipolysis Set (Radial Fiber)

Set: 5 pieces cannula
Fiber Size: 200-600µm fiber
Length: 100mm,150mm,200mm
250mm,300mm



PLDD Accessories

Puncture needle
Y-valve
Optical fiber (200um/400um)
Application: PLDD



Chivate Proctoscope

Material Plastic
Size : Length= 15 cm, Width= 3.5 cm
Inner= 3.8 cm, Outer= 4 cm
Light Source : External
Application: Proctology



SUI Probe Set

Fiber diameter: 600um
Length: 219.5mm
Outside diameter: 35mm
Connector: SMA905



Spider Vein Handpiece

Aiming Beam: 650 nm
Display Type: Color Touch Screen
Laser Wavelength: 980 nm
Application: Spider Vein



Fiber Stripper

Blade Material: Hardened Steel
AWG Size: 28-18
Handle Material: Thermoplastic
Range: 18-26AWG
Stripping Capacity: 0.30-1.00 mm



ENT Handpiece

Set of 7 pieces
Gear Ratio : Direct
Ergonomics : Straight
Length : 143 mm (5.6 in)
Application: ENT



Disp. Proctoscope

Weight 100 g
Product Dimensions : 20 x 15 x 5 cm
Height : 5 Centimeters
Width : 15 Centimeters



Focus Handpiece

SMA 905 connector
Magnification confocal: 1:1
Connector diameter: 1mm, 2mm and 3mm
Dimension : <Φ18*120mm
Application: Spider Vein



Different Wavelength & Applications

| Applications | Type | Wavelength (nm) | | | | | | | | | | | | | | | | | | |
|----------------------|----------------------------------|-----------------|-----|-----|-----|-----|-----|-----|-----|-----|-----|-----|-----|-----|------|------|------|------|------|------|
| Aesthetics | | 405 | 405 | 635 | 652 | 670 | 689 | 752 | 766 | 794 | 810 | 915 | 940 | 980 | 1064 | 1210 | 1320 | 1470 | 1550 | 1940 |
| | Acne Treatment | | X | | | | | | | | | | | | | | | X | | |
| | Hair and Wrinkle Removal | | | | | | | | X | | X | X | | | X | | | | X | X |
| | Tissue Tightening | | | | | | | | | | X | X | | | | | | X | X | |
| | Laser Skin Resurfacing | | | | | | | | | | X | X | | | | | | | | |
| | Lipolysis | | | | | | | | | | | | | | X | X | | X | | |
| | Pigmented Lesions | | | | | | | | | | X | | X | X | | | | | | |
| | Tooth Whitening | | | | | | | | | | X | | | X | | | | | | |
| Diagnostics | Varicose Vein Removal | | | | | | | | | | | | X | | | | | | | |
| | MRI | | | | | | | | | X | | | | | | | | | | |
| Photodynamic Therapy | Age-Related Macular Degeneration | | | | | | X | X | | | | | | | | | | | | |
| | Cancer Treatment | | | | | X | X | | | | | | | | | | | | | |
| | Wound Healing | X | | X | | | | | | | | | | X | | | | | | |
| Surgical Treatment | Dental Treatment | | | | | | | | | | | | | X | | | | | | |
| | Endovenous Treatment | | | | | | | | | | | | X | | | | | X | | X |
| | General Surgery | | | | | | | | | | | | X | X | | X | X | X | X | |
| | Microsurgery | | | | | | | | | | | | | X | X | | | | | |
| | Urology | | | | | | | | | | | | | X | | | X | X | | |

Dimensions & Packing Specifications

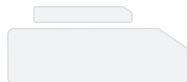
| | |
|----------------------------|--------------------------|
| Laser Dimensions(HxWxD) | L27.5 * W28.3 * H18.6 cm |
| Packing Dimensions(HxWxD) | L54 * W47.5 * H33 cm |
| Laser Weight | 7.5kgs |
| Weight of Laser With Cases | 13.5kgs |

Bioluminescent Color Options

Lavender Blush



Smoke White



Pastel Yellow



Electric Black



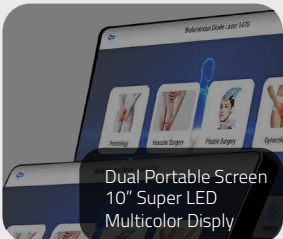
Alice Blue



Pastel Mint



Specifications



Available WaveLengths

| Brand Name | Model # | Wavelengths | Output Power | Core Feature |
|-------------|---------|-----------------------|--------------|---|
| Bioluminous | A1 | BL 635nm | 2W | Basic Set 10" LED Screen 2Yr Warranty |
| Bioluminous | A2 | BL 660nm | 2W | Basic Set 10" LED Screen 2Yr Warranty |
| Bioluminous | A3 | BL 810nm | 20W | Basic Set 10" LED Screen 2Yr Warranty |
| Bioluminous | C1 | BL 915nm | 20W | Basic Set 10" LED Screen 2Yr Warranty |
| Bioluminous | C2 | BL 980nm | 20W | Basic Set 10" LED Screen 2 Yr Replacement Warranty |
| Bioluminous | C3 | BL 980nm | 20W | C2+ Ai Goggles Internet Connection Gallery 3 Yr Replacement Warranty |
| Bioluminous | E1 | BL 1064nm | 20W | Basic Set 10" LED Screen 2Yr Warranty |
| Bioluminous | M3 | BL 1470nm | 10W | Basic Set 10" LED Screen 1 Yr Warranty |
| Bioluminous | M4 | BL 1470nm | 15W | Basic Set 10" LED Screen 2 Yr Warranty |
| Bioluminous | M5 | BL 1470nm | 15W | M4+ Advanced Set Internet Gallery Multi User Patient Data |
| Bioluminous | M6 | BL 1470nm | 15W | M5+ Advanced Set 2Yr Replacement Warranty Dual Screen Ai Goggles |
| Bioluminous | M7 | BL 1470nm | 5W | M6+ Advanced Set Cruise Control Inbuid Printer 5 Year Warrenty |
| Bioluminous | M8 | BL 1470nm | 5W | M7+ Advanced Set AR Holo Lense - 2 AR & Ai Software |
| Bioluminous | M9 | BL 1470nm | 20W | M8+ Advanced Set Robotic Arm |
| Bioluminous | G1 | BL 1940nm | 7W | Advanced Set 2Yr Warranty Internet Gallery Multiple User Patient Data |
| Bioluminous | G2 | BL 1940nm+980 | 7W + 20W | Advanced Set 2Yr Warranty Internet Gallery Multiple User Patient Data |
| Bioluminous | L1 | BL 980nm+1470nm | 20W+15W | Basic Set 10" LED Screen 2Yr Warranty |
| Bioluminous | L2 | BL 980nm+1470nm | 20W+15W | Advanced Set 5 Year Warranty Ai Goggle Dual Screen Internet Gallery |
| Bioluminous | L3 | BL 980nm+1470nm | 20W+15W | L2+ 5 Year Replacement Warranty AR Holo Lense - 2 Robotic Arm |
| Bioluminous | X1 | BL 635nm+980nm+1470nm | 0.3W+15W+15W | Basic Set 10" LED Screen 2Yr Warranty |
| Bioluminous | X2 | BL 635nm+980nm+1470nm | 0.3W+20W+20W | Advanced Set Ai Goggle Dual Screen Internet Gallery 2Yr Warranty |
| Bioluminous | X3 | BL 635nm+980nm+1470nm | 0.3W+20W+20W | X2+ Advanced Set Hololens Robotic Arm 5Yr Warranty |
| Bioluminous | Z1 | BL 635nm+980nm+1470nm | 2W+20W+15W | Basic Set 10" LED Screen 2Yr Warranty |
| Bioluminous | Z2 | BL 635nm+980nm+1470nm | 2W+20W+15W | Advanced Set Ai Goggle Dual Screen Internet Gallery 2Yr Warranty |
| Bioluminous | Z3 | BL 635nm+980nm+1470nm | 2W+20W+15W | Z2+ Advanced Set Hololense Robotic Arm 5Yr Warranty |



ACCESSORIES SPECIFICATIONS

Technical Specifications

| Technical Specifications | | | | | | | | | |
|------------------------------|-------------------------------|---------------------|---------------------|---------------------|----------------------|----------------------|----------------------|----------------------|----------------------------------|
| Laser Type | High Power GaAlAs Diode Laser | | | | | | | | |
| Wavelength | --- | 915 | 980 | 980 | 1064 | 1470 | 1470 | 1470 | 1470 |
| Max Power | --- | 20W | 20W | 20W | 20W | 10W | 15W | 15W | 15W |
| Aiming beam | 635-650nm | ✓ | ✓ | ✓ | ✓ | ✓ | ✓ | ✓ | ✓ |
| Operation Mode | CW, IMP | ✓ | ✓ | ✓ | ✓ | ✓ | ✓ | ✓ | ✓ |
| Beam Delivery | Fiber Optic-SMA905 | ✓ | ✓ | ✓ | ✓ | ✓ | ✓ | ✓ | ✓ |
| Optical Fiber Compatible | SMA 905 | ✓ | ✓ | ✓ | ✓ | ✓ | ✓ | ✓ | ✓ |
| Controller | Microprocessor | ✓ | ✓ | ✓ | ✓ | ✓ | ✓ | ✓ | ✓ |
| Class of Medical Device | IIB | ✓ | ✓ | ✓ | ✓ | ✓ | ✓ | ✓ | ✓ |
| Footswitch Protection Degree | IPX8 | ✓ | ✓ | ✓ | ✓ | ✓ | ✓ | ✓ | ✓ |
| | | 915nm Model-BLC1 | 980nm Model-BLC2 | 980nm Model-BLC3 | 1064nm Model-BLE1 | 1470nm Model-BLM3 | 1470nm Model-BLM4 | 1470nm Model-BLM5 | 1470nm Model-BLM6 |
| | | | | | | 1470nm Model-BLM7 | 1470nm Model-BLM8 | 1470nm Model-BLM9 | |
| | | | | | | | | | 1940nm Model-BLG1 |
| | | | | | | | | | 1940nm+980 Model-BLG2 |
| | | | | | | | | | 980nm+1470nm Model-BLL1 |
| | | | | | | | | | 980nm+1470nm Model-BLL2 |
| | | | | | | | | | 980nm+1470nm Model-BLL3 |
| | | | | | | | | | 635nm+980nm+1470nm Model-BLX1 |
| | | | | | | | | | 635nm+980nm+1470nm Model-BLX2 |
| | | | | | | | | | 635nm+980nm+1470nm Model-BLX3 |
| | | | | | | | | | 635nm+980nm+1470nm Model-BLZ1 |
| | | | | | | | | | 635nm+980nm+1470nm Model-BLZ2 |
| | | | | | | | | | 635nm+980nm+1470nm Model-BLZ3 |

Display & Software Specifications

| | | | | | | | | | | | | | | | | | | | | | | | | | | | | | | | | | |
|--------------------|---|---|---|---|---|---|---|---|---|---|---|---|---|---|---|---|---|---|---|---|---|---|---|---|---|---|---|---|---|---|---|---|---|
| Display | 10.1 inches True Color Touch Screen with 1920*1200 resolution | ✓ | ✓ | ✓ | ✓ | ✓ | ✓ | ✓ | ✓ | ✓ | ✓ | ✓ | ✓ | ✓ | ✓ | ✓ | ✓ | ✓ | ✓ | ✓ | ✓ | ✓ | ✓ | ✓ | ✓ | ✓ | ✓ | ✓ | ✓ | ✓ | ✓ | ✓ | ✓ |
| Operating Software | Android OS | ✓ | ✓ | ✓ | ✓ | ✓ | ✓ | ✓ | ✓ | ✓ | ✓ | ✓ | ✓ | ✓ | ✓ | ✓ | ✓ | ✓ | ✓ | ✓ | ✓ | ✓ | ✓ | ✓ | ✓ | ✓ | ✓ | ✓ | ✓ | ✓ | ✓ | ✓ | ✓ |
| Touch Sensitivity | Feather Touch Disply | ✓ | ✓ | ✓ | ✓ | ✓ | ✓ | ✓ | ✓ | ✓ | ✓ | ✓ | ✓ | ✓ | ✓ | ✓ | ✓ | ✓ | ✓ | ✓ | ✓ | ✓ | ✓ | ✓ | ✓ | ✓ | ✓ | ✓ | ✓ | ✓ | ✓ | ✓ | ✓ |

Safety & Security Specifications

| | | | | | | | | | | | | | | | | | | | | | | | | | | | | | | | | | |
|----------------------------|-----------------------|---|---|---|---|---|---|---|---|---|---|---|---|---|---|---|---|---|---|---|---|---|---|---|---|---|---|---|---|---|---|---|---|
| Cooling | Air & Thermoelectric | ✓ | ✓ | ✓ | ✓ | ✓ | ✓ | ✓ | ✓ | ✓ | ✓ | ✓ | ✓ | ✓ | ✓ | ✓ | ✓ | ✓ | ✓ | ✓ | ✓ | ✓ | ✓ | ✓ | ✓ | ✓ | ✓ | ✓ | ✓ | ✓ | ✓ | ✓ | ✓ |
| Laser safety Class | 4 | ✓ | ✓ | ✓ | ✓ | ✓ | ✓ | ✓ | ✓ | ✓ | ✓ | ✓ | ✓ | ✓ | ✓ | ✓ | ✓ | ✓ | ✓ | ✓ | ✓ | ✓ | ✓ | ✓ | ✓ | ✓ | ✓ | ✓ | ✓ | ✓ | ✓ | ✓ | ✓ |
| Electric Safety Class | I Type B | ✓ | ✓ | ✓ | ✓ | ✓ | ✓ | ✓ | ✓ | ✓ | ✓ | ✓ | ✓ | ✓ | ✓ | ✓ | ✓ | ✓ | ✓ | ✓ | ✓ | ✓ | ✓ | ✓ | ✓ | ✓ | ✓ | ✓ | ✓ | ✓ | ✓ | ✓ | ✓ |
| Power Supply of AC Adapter | 110-240 VAC: 50-60 Hz | ✓ | ✓ | ✓ | ✓ | ✓ | ✓ | ✓ | ✓ | ✓ | ✓ | ✓ | ✓ | ✓ | ✓ | ✓ | ✓ | ✓ | ✓ | ✓ | ✓ | ✓ | ✓ | ✓ | ✓ | ✓ | ✓ | ✓ | ✓ | ✓ | ✓ | ✓ | ✓ |
| Safety Lock | Available | ✓ | ✓ | ✓ | ✓ | ✓ | ✓ | ✓ | ✓ | ✓ | ✓ | ✓ | ✓ | ✓ | ✓ | ✓ | ✓ | ✓ | ✓ | ✓ | ✓ | ✓ | ✓ | ✓ | ✓ | ✓ | ✓ | ✓ | ✓ | ✓ | ✓ | ✓ | ✓ |
| Carry Case | Yes | ✓ | ✓ | ✓ | ✓ | ✓ | ✓ | ✓ | ✓ | ✓ | ✓ | ✓ | ✓ | ✓ | ✓ | ✓ | ✓ | ✓ | ✓ | ✓ | ✓ | ✓ | ✓ | ✓ | ✓ | ✓ | ✓ | ✓ | ✓ | ✓ | ✓ | ✓ | ✓ |

Features

| | | | | | | | | | | | | | | | | | | | | | | | | | | | | | | | | | |
|-------------------------|------|------|------|------|------|------|------|------|------|------|------|------|------|------|------|------|------|------|------|------|------|------|------|------|------|------|------|------|------|------|------|------|------|
| Internet Connectivity | ✓ | ✓ | ✓ | ✓ | ✓ | ✓ | ✓ | ✓ | ✓ | ✓ | ✓ | ✓ | ✓ | ✓ | ✓ | ✓ | ✓ | ✓ | ✓ | ✓ | ✓ | ✓ | ✓ | ✓ | ✓ | ✓ | ✓ | ✓ | ✓ | ✓ | ✓ | ✓ | ✓ |
| Gallery | ✓ | ✓ | ✓ | ✓ | ✓ | ✓ | ✓ | ✓ | ✓ | ✓ | ✓ | ✓ | ✓ | ✓ | ✓ | ✓ | ✓ | ✓ | ✓ | ✓ | ✓ | ✓ | ✓ | ✓ | ✓ | ✓ | ✓ | ✓ | ✓ | ✓ | ✓ | ✓ | ✓ |
| Patients Database | ✓ | ✓ | ✓ | ✓ | ✓ | ✓ | ✓ | ✓ | ✓ | ✓ | ✓ | ✓ | ✓ | ✓ | ✓ | ✓ | ✓ | ✓ | ✓ | ✓ | ✓ | ✓ | ✓ | ✓ | ✓ | ✓ | ✓ | ✓ | ✓ | ✓ | ✓ | ✓ | ✓ |
| Software Update | ✓ | ✓ | ✓ | ✓ | ✓ | ✓ | ✓ | ✓ | ✓ | ✓ | ✓ | ✓ | ✓ | ✓ | ✓ | ✓ | ✓ | ✓ | ✓ | ✓ | ✓ | ✓ | ✓ | ✓ | ✓ | ✓ | ✓ | ✓ | ✓ | ✓ | ✓ | ✓ | ✓ |
| Multiple User Profile | ✓ | ✓ | ✓ | ✓ | ✓ | ✓ | ✓ | ✓ | ✓ | ✓ | ✓ | ✓ | ✓ | ✓ | ✓ | ✓ | ✓ | ✓ | ✓ | ✓ | ✓ | ✓ | ✓ | ✓ | ✓ | ✓ | ✓ | ✓ | ✓ | ✓ | ✓ | ✓ | ✓ |
| Free Training Support | ✓ | ✓ | ✓ | ✓ | ✓ | ✓ | ✓ | ✓ | ✓ | ✓ | ✓ | ✓ | ✓ | ✓ | ✓ | ✓ | ✓ | ✓ | ✓ | ✓ | ✓ | ✓ | ✓ | ✓ | ✓ | ✓ | ✓ | ✓ | ✓ | ✓ | ✓ | ✓ | ✓ |
| GPS | ✓ | ✓ | ✓ | ✓ | ✓ | ✓ | ✓ | ✓ | ✓ | ✓ | ✓ | ✓ | ✓ | ✓ | ✓ | ✓ | ✓ | ✓ | ✓ | ✓ | ✓ | ✓ | ✓ | ✓ | ✓ | ✓ | ✓ | ✓ | ✓ | ✓ | ✓ | ✓ | ✓ |
| Dual Screen | ✓ | ✓ | ✓ | ✓ | ✓ | ✓ | ✓ | ✓ | ✓ | ✓ | ✓ | ✓ | ✓ | ✓ | ✓ | ✓ | ✓ | ✓ | ✓ | ✓ | ✓ | ✓ | ✓ | ✓ | ✓ | ✓ | ✓ | ✓ | ✓ | ✓ | ✓ | ✓ | ✓ |
| AI Goggles | ✓ | ✓ | ✓ | ✓ | ✓ | ✓ | ✓ | ✓ | ✓ | ✓ | ✓ | ✓ | ✓ | ✓ | ✓ | ✓ | ✓ | ✓ | ✓ | ✓ | ✓ | ✓ | ✓ | ✓ | ✓ | ✓ | ✓ | ✓ | ✓ | ✓ | ✓ | ✓ | ✓ |
| Laser Stand | ✓ | ✓ | ✓ | ✓ | ✓ | ✓ | ✓ | ✓ | ✓ | ✓ | ✓ | ✓ | ✓ | ✓ | ✓ | ✓ | ✓ | ✓ | ✓ | ✓ | ✓ | ✓ | ✓ | ✓ | ✓ | ✓ | ✓ | ✓ | ✓ | ✓ | ✓ | ✓ | ✓ |
| Printer Attached | ✓ | ✓ | ✓ | ✓ | ✓ | ✓ | ✓ | ✓ | ✓ | ✓ | ✓ | ✓ | ✓ | ✓ | ✓ | ✓ | ✓ | ✓ | ✓ | ✓ | ✓ | ✓ | ✓ | ✓ | ✓ | ✓ | ✓ | ✓ | ✓ | ✓ | ✓ | ✓ | ✓ |
| Augment Reality Goggles | ✓ | ✓ | ✓ | ✓ | ✓ | ✓ | ✓ | ✓ | ✓ | ✓ | ✓ | ✓ | ✓ | ✓ | ✓ | ✓ | ✓ | ✓ | ✓ | ✓ | ✓ | ✓ | ✓ | ✓ | ✓ | ✓ | ✓ | ✓ | ✓ | ✓ | ✓ | ✓ | ✓ |
| Robotic Arm | ✓ | ✓ | ✓ | ✓ | ✓ | ✓ | ✓ | ✓ | ✓ | ✓ | ✓ | ✓ | ✓ | ✓ | ✓ | ✓ | ✓ | ✓ | ✓ | ✓ | ✓ | ✓ | ✓ | ✓ | ✓ | ✓ | ✓ | ✓ | ✓ | ✓ | ✓ | ✓ | ✓ |
| Warranty | 2 Yr | 2 Yr | 2 Yr | 3 Yr | 2 Yr | 1 Yr | 2 Yr | 2 Yr | 2 Yr | 5 Yr | 5 Yr | 5 Yr | 5 Yr | 2 Yr | 2 Yr | 2 Yr | 2 Yr | 2 Yr | 5 Yr | 5 Yr | 5 Yr | 2 Yr | 2 Yr | 2 Yr | 5 Yr | 2 Yr | 2 Yr | 2 Yr | 2 Yr | 2 Yr | 5 Yr | 5 Yr | 5 Yr |



VIEONIX HEALTH SYSTEMS PVT LTD

li-21 Ada Colony Naini Allahabad, Uttar Pradesh
211008

+91 8318181362

Authorised Sales & Service Partner for UP



BL WhatsApp No

+91 9778682525 | +91 9895012943

BL Service :- www.bioluminous.in/support



/bioluminous



/bioluminous



@bioluminous



/bioluminousglobal

To Know More About BL

Visit :- www.bioluminous.uk

For enquiries please write to info@bioluminous.uk